

Spraying equipment controls

Siemens SINUMERIK ONE with Handheld Terminal HT10

Advantages of the SINUMERIK ONE

High energy efficiency thanks to the regenerative capability of the power units (electrical energy is recovered from the braking energy)

Special protection of the electronic components against dirt and humidity (PCBs are sealed), suitable for use in foundries and forges

Open architecture with TCP/IP interface for connection to the company network

Use of unmodified standard components (the individual controller components do not need to be programmed or modified)

Advantages of the Handheld Terminal HT10

Full-graphics 10" multi-touch display

Rugged, compact and ergonomic

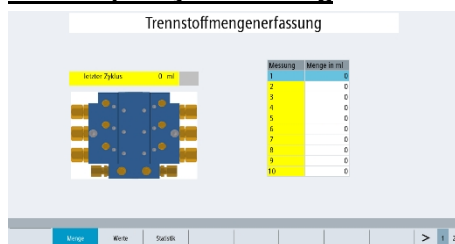
Customized interface:

- any application can be displayed
- easy to use
- machine- and application-specific functions are graphically prepared and optimized for convenient operation



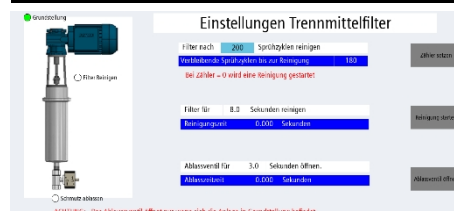
Examples

Flow Capacity Monitoring



Display of circular distribution and listing of measurement results

Fully automated spray media filtering



parameter input and status indicator

USB interface for program import and export

Integration of additional information for the user

- Listing of specific NC commands
- Storage of operating or maintenance instructions
- Storage of circuit diagrams
- Storage of spare parts lists

GERLIEVA control cabinet with roof-mounted cooling unit

